

BOUNDARY

ABIQUE REST

PROGRESSING

POSSIBILITY AT

PEACHTREE AT 17TH

1389, 1401 + 1409 PEACHTREE STREET | 30309

A DEVELOPMENT OF



PARKSIDE PARTNERS

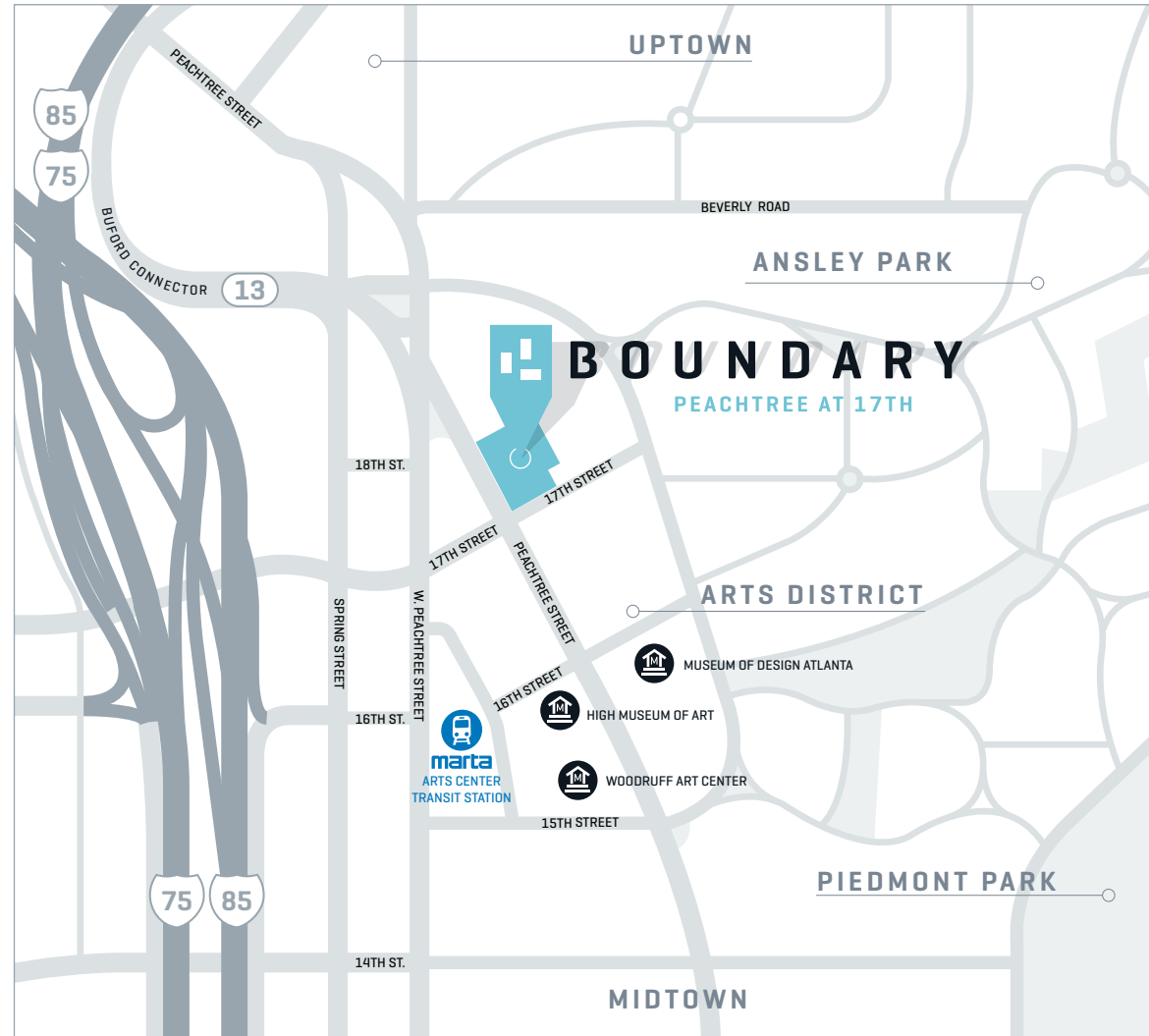
INTRODUCING BOUNDARY

Boundary is a visionary three-building campus united by a 1/4-acre linear park located at the prominent intersection of Peachtree at 17th in Midtown ATL. Recently acquired by Parkside Partners with dramatic redevelopment and architectural unification efforts realized — discover dynamic space for companies seeking a Peachtree Street address and unmatched visibility.

Currently 40% pre-leased, availabilities range from 1,000 SF to exclusive full building opportunities.

Limited retail, showroom and ground floor restaurant space opportunities are also available.

Contact Parkside Partners to learn more about how Boundary can set the tone for permanence and possibility for your company.

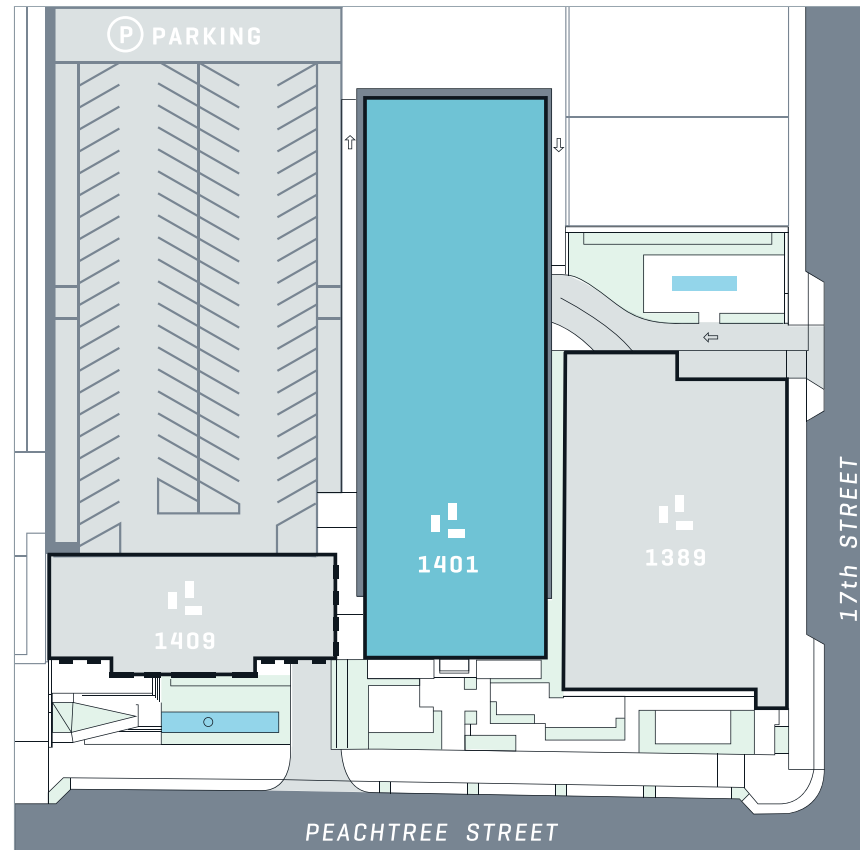


MAKE YOUR MARK

OPPORTUNITY OVERVIEW

1401 PEACHTREE

- 97,500 SF on 5 levels
- Loft office | Arcade-level retail/showroom
- Availability from 1,000 to 97,500 SF (full building)
- 10' to 16' ceiling heights
- Planned multi-function amenities floor including social hub, meeting space and fitness center with lockers and showers
- *Prominent signage opportunities available for tenants who qualify*



All three buildings
are Wired Score
Certified Silver

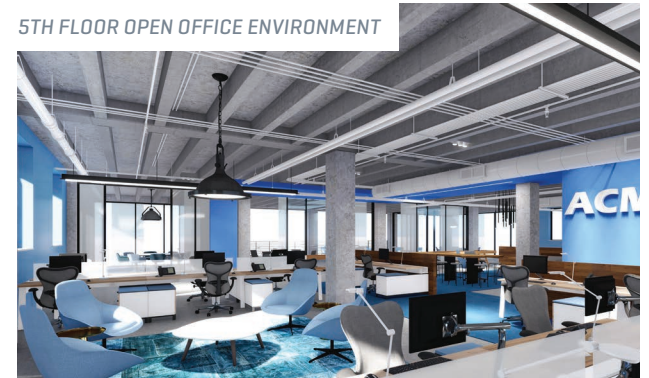
ARCADE-LEVEL RETAIL/SHOWROOM



5TH FLOOR BACK PORCH



5TH FLOOR OPEN OFFICE ENVIRONMENT



AN UP CLOSE LOOK



VIEW LOOKING NORTH THROUGH 'THE BOUNDS'

FACTS IN NUMBERS

300'

of premier frontage
and brand visibility on
Peachtree Street

159K

of office / retail /
showroom /
restaurant potential

.25
ACRE

linear park, 'The Bounds', an uncommon
common area perfect for people watching,
dog walking and happy hour conversation

INTRODUCING THE AMENITIES FLOOR

1401 PEACHTREE



500 SF OF MEETING SPACE

with an eight (±) person conference room and two huddle rooms

3,000 SF SOCIAL HUB

with plentiful open lounge, gaming areas and complementary wifi

1,700 SF FITNESS CENTER

with modern equipment, lockers and shower rooms

PROXIMITY ON PACE

CENTERED BETWEEN UPTOWN AND THE ARTS DISTRICT,
BOUNDARY PROVIDES EFFICIENT TRAVEL (NO MATTER YOUR METHOD OF TRANSPORT)



Short bike ride to Piedmont Park and the Atlanta BeltLine



Preferred access to I-75/85 and the Buford Connector (< .4 miles)



Abundant surface street alt. route access via 17th Street



More than two dozen dining/brew options within a 10 min. walk

Walk Score = 80 (and growing!)

WITHIN A
10 MIN. STROLL

5 MIN.

to MODA, High Museum of Art,
and The Woodruff Arts Center

6 MIN.

to MARTA
Arts Center Station

8 MIN.

to Colony Square
(Main & Main food hall)

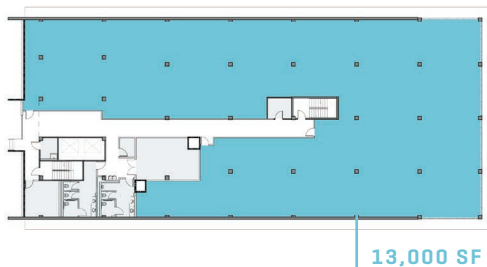
10 MIN.

to Tech Square

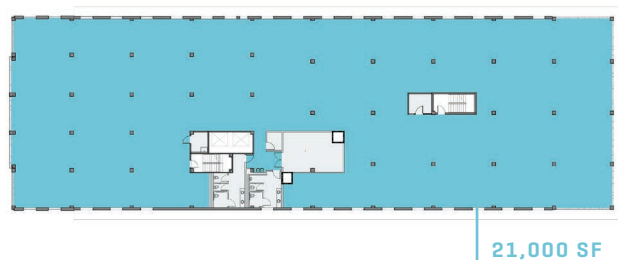
ARCADE LEVEL: 3,500 SF AVAILABLE



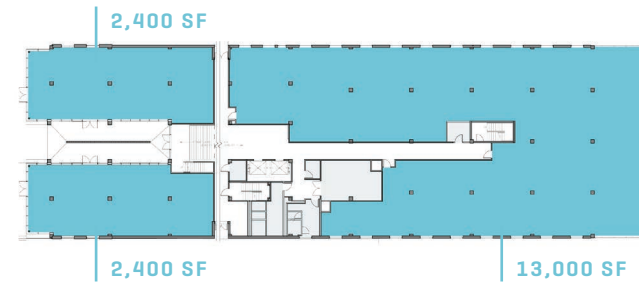
SECOND FLOOR: 13,000 SF AVAILABLE



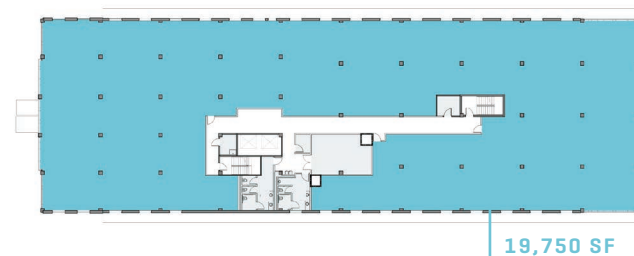
FOURTH & FIFTH FLOOR: 21,000 SF AVAILABLE

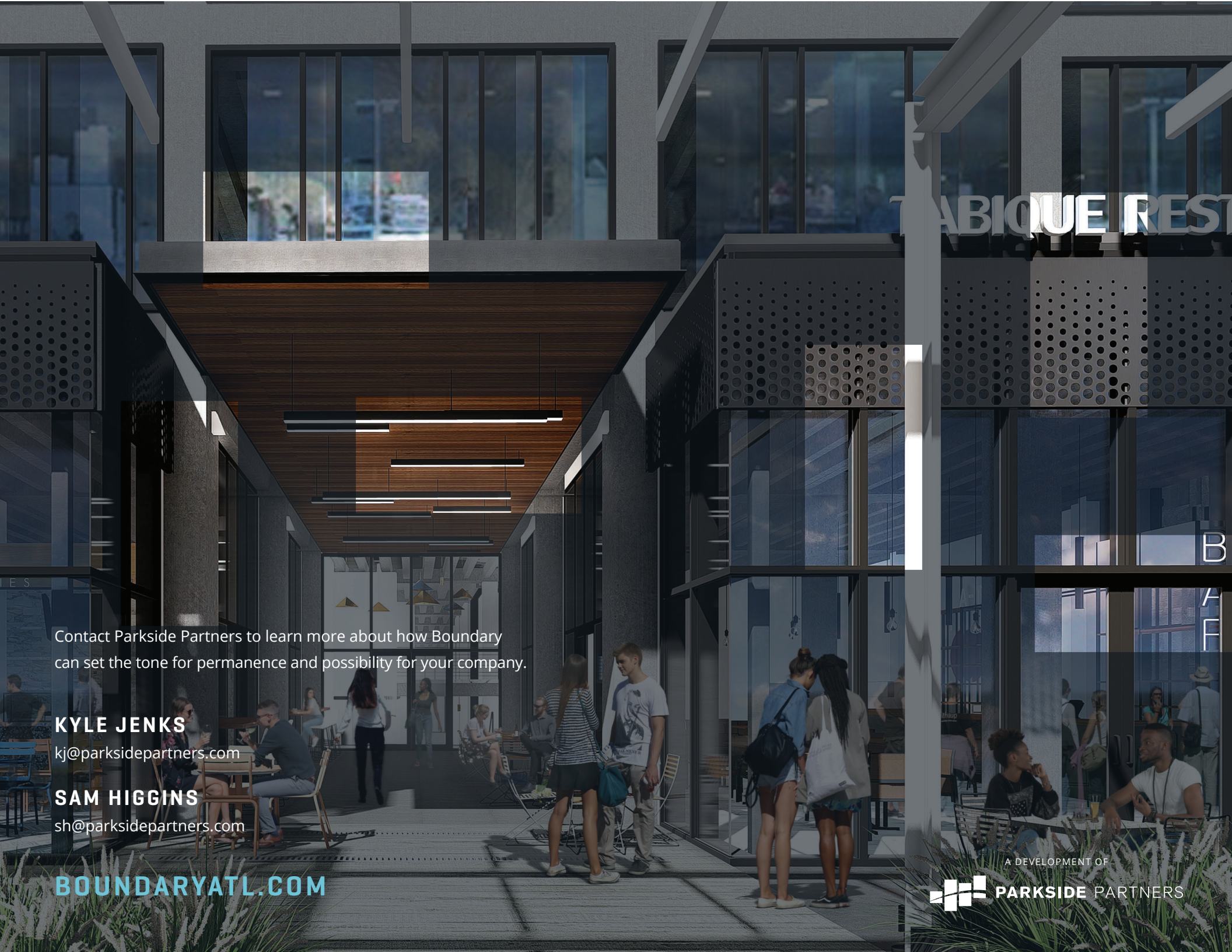


FIRST FLOOR: 17,800 SF AVAILABLE



THIRD FLOOR: 19,750 SF AVAILABLE





Contact Parkside Partners to learn more about how Boundary can set the tone for permanence and possibility for your company.

KYLE JENKS
kj@parksidepartners.com

SAM HIGGINS
sh@parksidepartners.com

BOUNDARYATL.COM

A DEVELOPMENT OF
 **PARKSIDE PARTNERS**